



TEST REPORT

No.1905018S02

Page 1 of 6

Applicant (Address)	Showven Technologies Co.,Ltd. Building B1,Changsha E Center No.18,Xiangtai Road,Liuyang Economic Development Zone,Changsha City,Hunan,China.
Factory (Address)	Showven Technologies Co.,Ltd. Building B1,Changsha E Center No.18,Xiangtai Road,Liuyang Economic Development Zone,Changsha City,Hunan ,China.
Product	SPARKULAR PRO
Product description	Model: BT71, BT72, BT73, BT74 All models have the same appearance and structure, and there are only differences in electrical parameters
Nature of tests	According to the IPX5 of IEC 60529:2013
Date of samples received	2019/05/13
Samples size	1 pcs (test at model BT71)
Test period	2019/05/13
Tested by	Dean Liu
Date of Approved	May 31, 2019
Approved by	Peter Liu



Remark:

This report details the result of the testing carried out on the samples submitted, the results contained in this test report do not relate to other samples of the same product

TEST REPORT

Product	SPARKULAR PRO	Model No.	BT71
Temperature/Humidity Request	15-35 C; R.H.: Max. 75 %	Test Items	1905018S-1/1
Reference Standard	IEC 60529:2013 IPX5	Test Period	2019/05/13

Test method:

The test is made by spraying the enclosure from all practicable directions with a stream of water from a standard test nozzle.

The conditions to be observed are as follows:

- internal diameter of nozzle: 6.3 mm;
- delivery rate: 12.5 l/min ± 5%
- water pressure: to be adjusted to achieve the specified delivery rate;
- core of the substantial stream: circle of approximately 40 mm diameter at 2.5 m distance from nozzle;
- test duration per square meter of enclosure surface area likely to be sprayed:1 min;
- minimum test duration: 3 min;
- distance from nozzle to enclosure surface: between 2.5 m and 3 m.

Test results: Qualified

There is no visible water trace on the internal circuit board and working motor of the sample after testing.

Test passed

Test photos are as follow:



Testing view

TEST REPORT

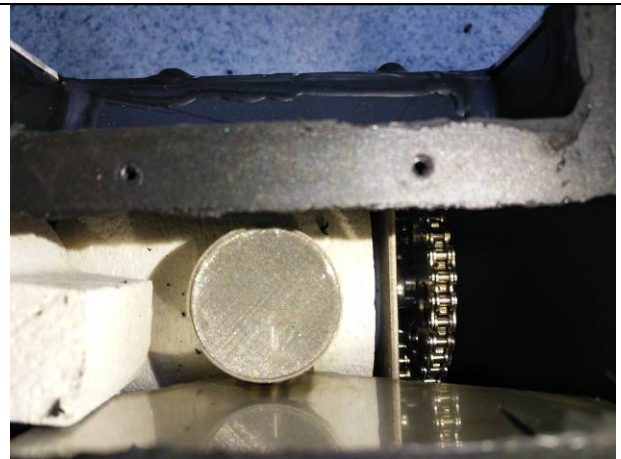
Sample photos after testing



Product inside view



Internal Motor 1

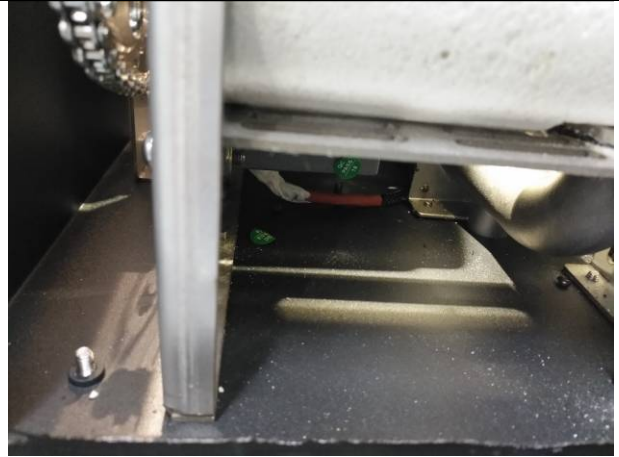


Internal Motor 2

TEST REPORT



Internal Motor 3



Inside view of bottom



Internal PCB 1



Internal PCB 1



Internal PCB 1

TEST REPORT

PHOTO DOCUMENTATION



Photo 1: view of test samples



Photo 2: view of test samples



TEST REPORT

NO.	Equipment	Model	S/N	Manufacturer	Due Date
SF-A-035	IPX1-6 protect testing system	SM-Y-200D	HY-IPX1-6	Haiyue	2020/1/24

----- End of test report -----